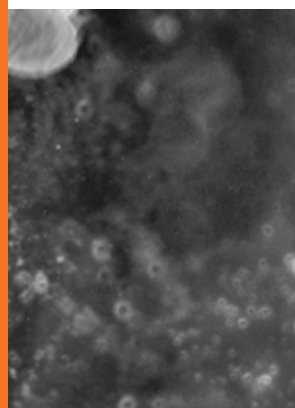


PRODUCT CATALOG

R&D, IN VITRO DIAGNOSTICS FOR FOOD SAFETY



**PROGNOSIS
BIOTECH**

THE PROGNOSIS BIOTECH STATEMENT: **ACCURACY THROUGH INNOVATION**



The word 'prognosis' comes from the Greek 'prognostikos' (knowledge beforehand). It combines 'pro' (before) and 'gnosis' (knowledge). Hippocrates used the word prognosis, much as we do today, to mean a foretelling of the course of a disease.

PROGNOSIS BIOTECH SA

is an innovative biotechnology company, specialized in developing and manufacturing next-generation immunoassays for the dairy, food and feed industries.

Based in Greece, ProGnosis Biotech is an export-oriented enterprise which through a large network of distributors, exports ELISA kits and Lateral-flow tests to more than 40 countries worldwide. In a market where the competition is highly sophisticated and within a continuous challenging environment, Prognosis Biotech has achieved to possess an important role in the food diagnostics industry by providing innovation solutions. The company is always devoted in continuous improvement as it invests in R&D more than 40% of the earnings of each fiscal year.

ACCURACY THROUGH INNOVATION

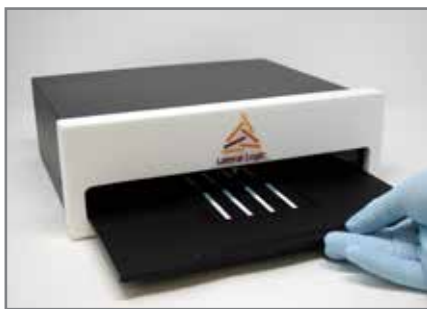
Food quality labs are quite different than biochemistry and R&D labs. There is a severe workload which prohibits the users from identifying the various sources of error as well as a constant demand for decisive results in the minimum amount of time. ProGnosis Biotech is devoted in producing immunological tests that are easy to use, reliable and accurate. Accuracy is achieved by a certain design of product steps, by total quality management and technological innovation.

PROGNOSIS BIOTECH SA IS COMMITTED TO HIGH QUALITY STANDARDS

Total Quality Management affects all company's processes and has been developed to fulfill internal quality standards as well as customer needs. Quality for ProGnosis Biotech means exceeding every individual user's expectations.

As far as the product quality is concerned, ProGnosis Biotech SA adheres to the rules of Good Manufacture Practices (GMP) and the International Organization for Standardization (ISO), while being certified with ISO 9001:2015 in Development, Manufacturing and Marketing of Diagnostic and Laboratory Products. Moreover, all our methods are fully harmonized with European and global standards.

ProGnosis Biotech develops innovative products, as demonstrated by the validations received from external institutes (ILVO validation, August 2018). In order to consistently provide top-quality products, ProGnosis participates on a monthly basis in Proficiency Tests organized by the most prestigious organizations in the UK, France, Germany, Italy, and the US.





LATERAL FLOW





SYMMETRIC

LATERAL FLOW | MYCOTOXINS

SYMMETRIC TECHNOLOGY

TRANSFORMS A SCREENING TOOL INTO A CONFIRMATORY METHOD

Designed and manufactured in Europe, Symmetric Technology is an outcome of an intensive 4-year R&D investment. Symmetric products are extremely accurate and precise producing also very high results in terms of sensitivity and stability.

First applied on Mycotoxins, Symmetric Technology signifies the transition of Lateral-flow sticks from being a low-esteemed screening tool into a reliable confirmatory method.

To this day, Lateral-flow tests demonstrate CVs of 20-40%, which are considerably higher than the equivalent ones of ELISA and HPLC. The Symmetric series can achieve a Coefficient of Variation lower than 8% within the critical area of interest, which is defined in every mycotoxin according to the existent legislation.



fall in love with your results...
sensitive, stable and true!

**SYMMETRIC M1 RECEIVED
THE ILVO VALIDATION,
CONFIRMING ITS
HIGH ACCURACY**

ILVO

Flanders Research Institute for
Agriculture, Fisheries and Food

SYMMETRIC M1

Symmetric M1 is a Lateral Flow test for the quantitative determination of Aflatoxin M1 in cow, sheep, goat and UHT milk.

Lateral flow characteristics:

- Lateral flow in dip stick format available in 48 and 96 test sticks
- Limit of detection (LOD): 2 ppt
- Range of quantification: 8-150 ppt
- Highly accurate results: (concentrations between 25 and 75ppt of AFM1) < 8 % CV
- Cross reaction (Aflatoxin M1 100%, Aflatoxin M2 <10%)
- Adjusted to the EU legislation limit
- Low procedure time (10 min)
- Shelf Life: 12 months | Storage 2-8 °C

CAT.NUMBER: S2148/S2196



SYMMETRIC M1 750

Symmetric M1 750 is a Lateral Flow test for the quantitative determination of Aflatoxin M1 in cow and UHT milk.

Lateral flow characteristics:

- Lateral flow in dip stick format available in 48 and 96 test sticks
- Limit of detection (LOD): 10 ppt
- Range of quantification: 30-750 ppt
- Highly accurate results: (concentrations between 100 and 500 ppt of AFM1) < 8 % CV
- Cross reaction (Aflatoxin M1 100%, Aflatoxin M2 <0.1%)
- Adjusted to the US and Asian legislation limits
- Low procedure time (8 min)
- Shelf Life: 12 months | Storage 2-8 °C

CAT.NUMBER: S2348/S2396

SYMMETRIC M1 1000

Symmetric M1 1000 is a Lateral Flow test for the quantitative determination of Aflatoxin M1 in cow and UHT milk.

Lateral flow characteristics:

- Lateral flow in dip stick format available in 48 and 96 test sticks
- Limit of detection (LOD): 22 ppt
- Range of quantification: 70-1000 ppt
- Optional visual detection limit at 500 ppt
- Low procedure time (3 min)
- Highly accurate results: (concentrations between 200 and 700 ppt of AFM1) < 8 % CV
- Cross reaction (Aflatoxin M1 100%, Aflatoxin M2 <0.1%)
- Adjusted to the US and Asian legislation limits
- Shelf Life: 12 months | Storage 2-8 °C

CAT.NUMBER: S2448/S2496

SYMMETRIC EXTRA SENSITIVE

tests are designed to quantify Mycotoxins at very low concentrations in grains, cereals and nuts.

SYMMETRIC B1 ES

Symmetric B1 Extra Sensitive is a Lateral Flow test for the quantitative determination of Aflatoxin B1.

Lateral flow characteristics:

- Lateral flow in dip stick format available in 24 and 48 test sticks
- Limit of detection (LOD): 0.1 ppb
- Range of quantification: 0.25-8 ppb
- Highly accurate results
- Adjusted to the EU legislation limit
- Low procedure time (8 min)
- Shelf Life: 12 months | Storage 2-8 °C

CAT.NUMBER: S3124/ S3148

SYMMETRIC TOTAL ES

Symmetric Total Extra Sensitive is a Lateral Flow test for the quantitative determination of Aflatoxins B1, B2, G1, G2.

Lateral flow characteristics:

- Lateral flow in dip stick format available in 24 and 48 test sticks
- Limit of detection (LOD): 0.1 ppb
- Range of quantification: 0.25-8 ppb
- Highly accurate results
- Adjusted to the EU legislation limit
- Cross reaction with Aflatoxin B1, B2, G1 and G2 is 100, 79, 89 and 45% respectively
- Low procedure time (10 min)
- Shelf Life: 12 months | Storage 2-8 °C

CAT.NUMBER: S3224/ S3248



SYMMETRIC OPTIMUM PERFORMANCE

tests are designed for complex matrixes, such as animal feed, and can analyze more than 30 different commodities.

SYMMETRIC B1 OP

Symmetric B1 OP is an innovative Lateral Flow test for the quantitative determination of Aflatoxin B1, in grains, nuts, cereals and other commodities including animal feed.

For the extraction step is used 50% ethanol.

Lateral flow characteristics:

- Lateral flow in dip stick format available in 24 and 48 test sticks
- Limit of detection (LOD): 1 ppb
- Range of quantification: 1.5-30 ppb
- Low procedure time (8 min)
- Designed for the most complex matrixes
- Validation of more than 30 different matrixes
- Highly accurate results
- Adjusted to the EU legislation limit
- Shelf Life: 12 months | Storage 2-8 °C

CAT.NUMBER: N3824/3848

SYMMETRIC TOTAL OP 0-50

Symmetric Total OP 0-50 is an innovative Lateral Flow test features for the quantitative determination of Aflatoxins B1, B2, G1, G2 in grains, nuts, cereals and other commodities including animal feed.

For the extraction step is used 50% ethanol.

Lateral flow characteristics:

- Lateral flow in dip stick format available in 24 and 48 test sticks
- Limit of detection (LOD): 2 ppb
- Range of quantification: 4-50 ppb
- Low procedure time (8 min)
- Designed for the most complex matrixes
- Validation of more than 30 different matrixes
- Highly accurate results
- Adjusted to the US and Asian legislation limits
- Shelf Life: 12 months | Storage 2-8 °C

CAT.NUMBER: N3924/3948



SYMMETRIC DON OP

Symmetric DON OP is an innovative Lateral Flow test features for the quantitative determination of Deoxynivalenol (DON) in grains, nuts, cereals and other commodities including animal feed.

For the extraction step is used DI water.

Lateral flow characteristics:

- Lateral flow in dip stick format available in 24 and 48 test sticks
- Limit of detection (LOD): 0.1 ppm
- Range of quantification: 0.15-5 ppm
- Low procedure time (8 min)
- Designed for the most complex matrices
- Validation of more than 30 different matrices
- Highly accurate results
- Shelf Life: 12 months | Storage 2-8 °C

CAT.NUMBER: N4124/4148





SYMMETRIC GREEN SERIES

ONE GREEN EXTRACTION...DESIGNED FOR ACCURACY

Symmetric Green is a highly innovative Lateral Flow test series, utilizing state-of-the-art features for the quantitative detection of all the major Mycotoxins (Aflatoxins B1, B2, G1, G2, Deoxynivalenol, Zearalenone, Ochratoxin, Fumonisin, T-2/HT-2) in grains, nuts, cereals and other commodities including animal feed.

SYMMETRIC GREEN SERIES UTILIZES AN AQUEOUS BUFFER FOR THE EXTRACTION STEP, WHILE IT PROVIDES A UNIQUE ADVANTAGE TO THE USERS AS THE SAME EXTRACTION CAN BE USED FOR ALL MYCOTOXINS.

The aqueous extraction method eliminates the adverse effects of organic solvents (such as methanol) on humans, avoiding their unnecessary use in the laboratory. Hazards caused by organic solvents are generally underrated, nevertheless they are quite serious especially when the individual is exposed to organic solvents on a regular basis. Hazards associated with organic solvents may occur from skin contact, inhalation or ingestion. Organic solvents such as methanol are skin irritants after coming in contact with the skin, while in prolonged exposure they can affect the function of the central nervous system.

SYMMETRIC B1 GREEN

Symmetric B1 Green is a Lateral Flow test for the quantitative determination of Aflatoxin B1, in grains, nuts, cereals and other commodities.

Lateral flow characteristics:

- Lateral flow in dip stick format available in 24 and 48 test sticks
- Limit of detection (LOD): 1 ppb
- Range of quantification: 2-40 ppb
- Highly accurate results
- Low procedure time (5 min)
- Adjusted to the EU legislation limit
- Shelf Life: 12 months | Storage 2-8 °C

CAT.NUMBER: S3724/S3748

SYMMETRIC TOTAL GREEN 0-30

Symmetric Total Green 0-30 is a Lateral Flow test for the quantitative determination of Aflatoxins B1, B2, G1, G2 in grains, nuts, cereals and other commodities.

Lateral flow characteristics:

- Lateral flow in dip stick format available in 24 and 48 test sticks
- Limit of detection (LOD): 0.8 ppb
- Range of quantification: 1.2-30 ppb
- Highly accurate results
- Cross reaction with Aflatoxin B1, B2, G1 and G2 is 100, 81, 73 and 55% respectively
- Adjusted to the EU, US and Asian legislation limits
- Low procedure time (5 min)
- Shelf Life: 12 months | Storage 2-8 °C

CAT.NUMBER: S3424/ S3448



SYMMETRIC DON GREEN

Symmetric Deoxynivalenol (DON) Green is a Lateral Flow test for the quantitative determination of Deoxynivalenol, in grains, nuts, cereals and other commodities.

Lateral flow characteristics:

- Lateral flow in dip stick format available in 24 and 48 test sticks
- Limit of detection (LOD): 0.1 ppm
- Range of quantification: 0.15-5 ppm
- Highly accurate results
- Low procedure time (5 min)
- Shelf Life: 12 months | Storage 2-8 °C

CAT.NUMBER: S4024/S4048

SYMMETRIC ZON GREEN

Symmetric Zearalenone (ZON) Green is a Lateral Flow test for the quantitative determination of Zearalenone, in grains, nuts, cereals and other commodities.

Lateral flow characteristics:

- Lateral flow in dip stick format available in 24 and 48 test sticks
- Limit of detection (LOD): 40 ppb
- Range of quantification: 60 – 800 ppb
- Highly accurate results
- Low procedure time (5 min)
- Shelf Life: 12 months | Storage 2-8 °C

CAT.NUMBER: S5024/ S5048

SYMMETRIC OCHRATOXIN GREEN

Symmetric Ochratoxin (OTA) Green is a Lateral Flow test for the quantitative determination of Ochratoxin, in grains, nuts, cereals and other commodities.

Lateral flow characteristics:

- Lateral flow in dip stick format available in 24 and 48 test sticks
- Limit of detection (LOD): 1 ppb
- Range of quantification: 1.5-30 ppb
- Highly accurate results
- Low procedure time (5 min)
- Shelf Life: 12 months | Storage 2-8 °C

CAT.NUMBER: S6024/ S6048

SYMMETRIC FUMONISIN GREEN

Symmetric Fumonisin Green is a Lateral Flow test for the quantitative determination of Fumonisin, in grains, nuts, cereals and other commodities.

Lateral flow characteristics:

- Lateral flow in dip stick format available in 24 and 48 test sticks
- Limit of detection (LOD): 0.05 ppm
- Range of quantification: 0.07 – 3 ppm
- Highly accurate results
- Low procedure time (5 min)
- Shelf Life: 12 months | Storage 2-8 °C

CAT.NUMBER: S7024/ S7048

SYMMETRIC T-2/HT-2 GREEN

Symmetric T-2/HT-2 Green is a Lateral Flow test for the quantitative determination of T-2/HT-2, in grains, nuts, cereals and other commodities.

Lateral flow characteristics:

- Lateral flow in dip stick format available in 24 and 48 test sticks
- Limit of detection (LOD): 20 ppb
- Range of quantification: 30-750 ppb T-2 and HT-2 toxin
- Highly accurate results
- Low procedure time (5 min)
- Shelf Life: 12 months | Storage 2-8 °C

CAT.NUMBER: S8024/ S8048



RAPID TEST

LATERAL FLOW | MILK ADULTERATION



THE ONLY FULLY QUANTITATIVE LATERAL FLOW TEST FOR MILK ADULTERATION

**RAPID TESTS CAN QUANTIFY AND ACCREDITATE RESULTS
FROM NEGATIVE TO >2% ADULTERATION, IN ONLY 3 MINUTES**

RAPID TEST COW

Rapid Test Cow is a Lateral flow test for the quantification of Cow's milk in Sheep's, Goat's or Human's milk in only 3 minutes. Rapid Test Cow can also be used in the field producing qualitative results.

Lateral flow characteristics:

- Lateral flow in dip stick format available in 30 and 120 test sticks
- Limit of detection (LOD): 0.1 % of the mixture in milk
- Range of quantification: from negative to 0-2% adulteration
- Easy to use, all disposables included
- Clear/easy to interpret Visual Results
- Highly selective antibodies. No false positive-negative results
- Low Procedure time, only 3 minutes
- Easily identify results with more than 50 % adulteration
- Trace adulteration also in Cheese
- Suitable for testing in the field & in the Laboratory
- Shelf Life: 12 months | Storage 15-25 °C

CAT.NUMBER: R1230/R12120 (Qualitative)

CAT.NUMBER: Q1230/Q12120 (Quantitative)

RAPID TEST GOAT

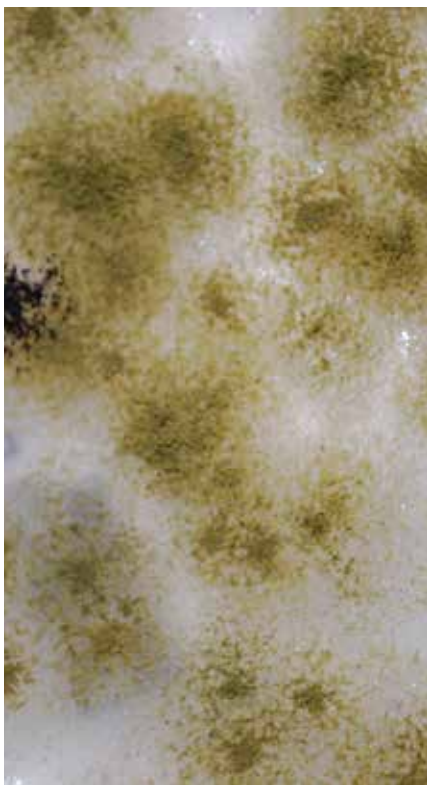
Rapid Test Goat is a Lateral flow test for the quantification of Goat's milk in Sheep's milk in only 3 minutes. Rapid Test Goat can also be used in the field producing qualitative results.

Lateral flow characteristics:

- Lateral flow in dip stick format available in 30 and 120 test sticks
- Limit of detection (LOD): 0.1 % of the mixture in milk
- Range of quantification: from negative to 0-2% adulteration
- Easy to use, all disposables included.
- Clear-easy to interpret Visual Results
- Highly selective antibodies. No false positive-negative results.
- Low Procedure time, only 3 minutes
- Easily identify results with more than 50 % adulteration.
- Trace adulteration also in Cheese
- Suitable for testing in the field & in the Laboratory
- Shelf Life: 12 months | Storage 15-25 °C

CAT.NUMBER: R1130/R11120 (Qualitative)

CAT.NUMBER: Q1130/Q11120 (Quantitative)





ELISA

MYCOTOXINS





**GET
AFLATOXIN M1
RESULTS IN
COMPLIANCE WITH
ISO 14675:2003
IN JUST 75 MIN**

AFLATOXIN M1

Aflatoxins are toxic metabolites of major concern to the dairy industry, generally produced by *Aspergillus flavus*, *A. parasiticus* and *A. nomius*. They can have immunosuppressive, mutagenic, teratogenic and carcinogenic effects. Aflatoxins that are ingested by animals in contaminated pellets and forage are biotransformed at the hepatic level into Aflatoxin M1 (AFM1). Aflatoxin is then excreted in this form into the milk used for human consumption and, it is also present in dairy products. AFM1 in milk and milk products is considered to pose certain hygienic risks for human health and as a result there is an established EU limit of 0,05 µg/kg (50ppt) and 0.025 µg/kg (25ppt) for infant food.



BIO-SHIELD M1 ES

Bio-Shield Aflatoxin M1 Extra Sensitive is an easy to use ELISA test, for the quantitative determination of Aflatoxin M1 in milk in compliance with ISO 14675:2003.

Elisa kit characteristics:

- Competitive Quantitative ELISA test with single-break strip plate with 48 wells (6 strips), 96 wells (12 strips) or 192 wells (24 strips)
- Limit of detection (LOD): 2 ppt
- Extremely wide range of quantification: 5-250 ppt
- High specificity and sensitivity
- Cross reaction (Aflatoxin M1 100%, Aflatoxin M2 <0.1%)
- Adjusted to the EU legislation limit
- Accreditable in compliance with ISO 14675:2003 (IDF 186:2003)
- Low procedure time (75min)
- All reagents are in ready to use format
- Shelf Life: 12 months | Storage 2-8 °C

CAT.NUMBER: B2048/B2096/B20192

BIO-SHIELD M1 BF

Bio-Shield Aflatoxin M1 Baby Food is an easy to use ELISA test, for the quantitative determination of Aflatoxin M1 in Cow's milk, Sheep's or Goat's milk, in accordance with the EU and Asian legislation limit for baby foods.

Elisa kit characteristics:

- Competitive Quantitative ELISA test with single-break strip plate with 48 wells (6 strips) or 96 wells (12 strips)
- Limit of detection (LOD): 1.5ppt
- Range of quantification: 5-80 ppt
- No centrifugation needed
- Rapid, innovative protocols for cheese and yogurt
- Cross reaction (Aflatoxin M1 100%, Aflatoxin M2 <0.1%)
- Adjusted to the EU and Asian legislation limit
- Accreditable in compliance with ISO 14675:2003 (IDF 186:2003)
- Low procedure time (75min)
- All reagents are in ready to use format
- Shelf Life: 12 months | Storage 2-8 °C

CAT.NUMBER: B3048/B3096

**BIO-SHIELD M1 ES RECEIVED THE ILVO VALIDATION,
CONFIRMING ITS HIGH ACCURACY**



BIO-SHIELD M1 FAST

Bio-Shield Aflatoxin M1 Fast is a fast ELISA test for the quantitative determination of Aflatoxin M1 in milk, in 30 minutes and by using only one standard!

Bio-Shield M1 Fast is a fast, and cost-effective screening method for Aflatoxin M1 in milk. The assay was developed and validated without any standard curve. After running the only standard of 0 ppt Aflatoxin M1 and the samples, concentrations are obtained by interpolation with the batch provided master-curve. Also, the free software Prognosis Data Reader can auto correct the time delay between the samples allowing for analysis of up to 47 samples with just one standard used.

Elisa kit characteristics:

- Competitive Quantitative ELISA test with single-break strip plate with 48 wells (6 strips) or 96 wells (12 strips)
- No need for sample pretreatment (Dilution or Centrifugation)
- Limit of detection (LOD): 5 ppt
- Wide range of quantification: 10-250 ppt
- Only one standard needed
- Adjusted to the EU legislation limit
- Very fast procedure time (30 min)
- All reagents are in ready to use format
- Shelf Life: 12 months | Storage 2-8 °C

CAT.NUMBER: B2548/B2596





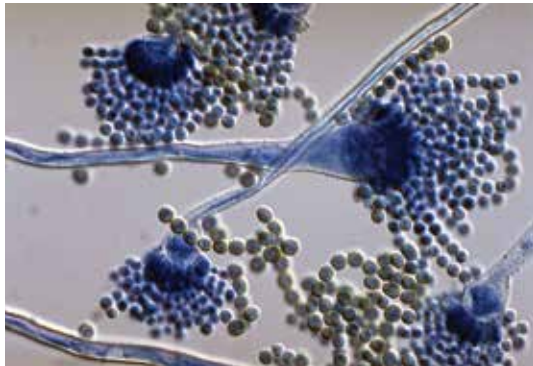
BIO-SHIELD M1 ULTRA FAST MILK & YOGURT

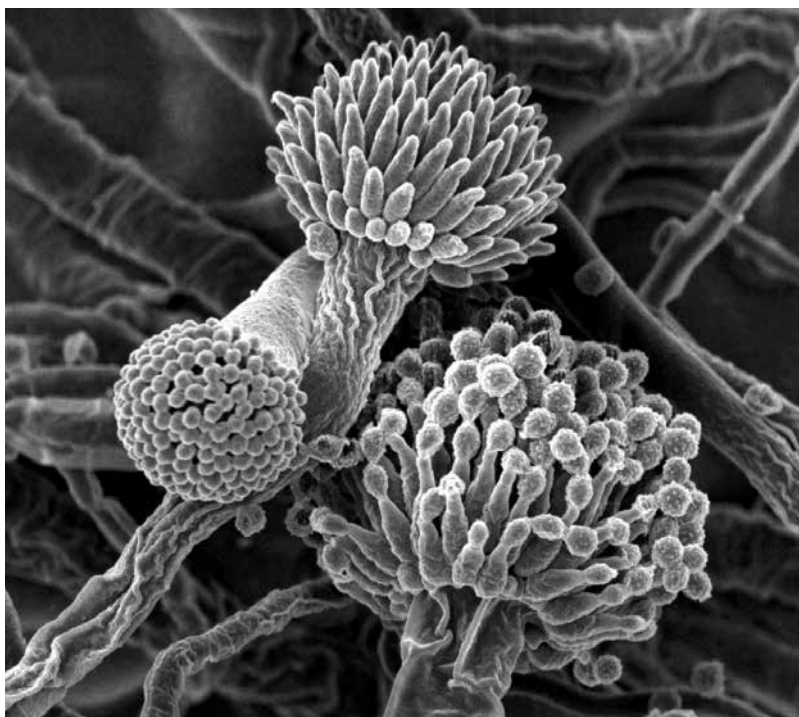
Bio-Shield Aflatoxin M1 Milk & Yogurt is an ELISA test for the quantitative determination of Aflatoxin M1 in yogurt drinks and milk.

Elisa kit characteristics:

- Competitive Quantitative ELISA test with single-break strip plate with 48 wells (6 strips) or 96 wells (12 strips)
- Limit of detection (LOD): 20 ppt for milk, milk powder, 30 ppt for yogurt drink
- Wide range of quantification: 70-1000 ppt for milk, milk powder or 105-1500 ppt for Yogurt drinks
- Cross reaction (Aflatoxin M1 100%, Aflatoxin M2 <0.1%)
- No need for sample pretreatment for milk
- Samples can be Milk or Yogurt drinks
- Adjusted to the 0.5 µg/kg legislation limit
- Ultra Fast procedure (20 min)
- All reagents are in ready to use format
- Shelf Life: 12 months | Storage 2-8 °C

CAT.NUMBER: B2248/B2296



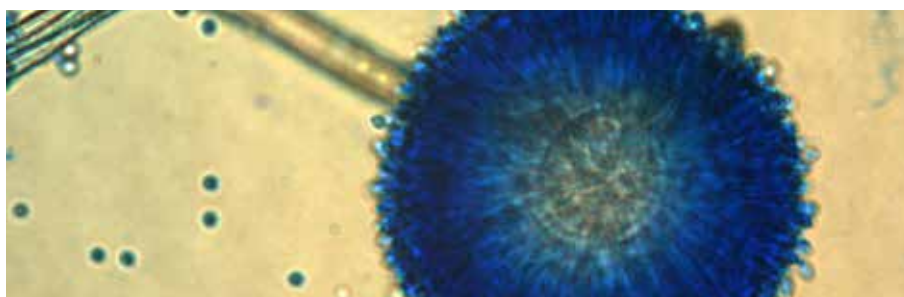


- ELISA KITS FOR ALL REGULATED MYCOTOXINS

- ONE, UNIQUE WAY OF SAMPLE PREPARATION

- BROAD RANGE OF VALIDATED MATRICES

- LOWEST LOD AND LOQ IN THE MARKET



MYCOTOXINS

Mycotoxins are poisonous chemical compounds produced by certain fungi. There are many such compounds, but only a few of them are regularly found in food and animal feedstuffs such as grains and seeds. Nevertheless, those that do occur in food have great significance in the health of humans and livestock. The effects of some food-borne mycotoxins are acute, symptoms of severe illness appearing very quickly. Other mycotoxins occurring in food have longer term chronic or cumulative effects on health, including the induction of several types of cancers and immune deficiency.

There are six mycotoxins, or groups of mycotoxins, that can be found quite often in food or feed: Deoxynivalenol, Zearalenone; Ochratoxin, Fumonisin, T2-HT2 toxins and Aflatoxins B1, B2, G1, G2.

The fungi that produce mycotoxins in food are categorized into two groups: those that invade before harvest, commonly called field fungi, and those that occur only after harvest, called storage fungi.

There are three types of toxicogenic field fungi:

- plant pathogens such as *F. graminearum* (deoxynivalenol, nivalenol)
- fungi that grow on senescent or stressed plants, such as *F. moniliforme* (fumonisin) and sometimes *A. flavus* (aflatoxin)
- fungi that initially colonise the plant before harvest and predispose the commodity to mycotoxin contamination after harvest, such as *P. verrucosum* (ochratoxin) and *A. flavus* (aflatoxin)

Most controlling government agencies worldwide have regulations regarding the amount of mycotoxins allowable in feed and food and especially in infant food. Accurate and rapid determination of the presence of mycotoxins in commodities is of paramount importance.

BIO-SHIELD B1 5

Bio-Shield B1 5 is an ELISA test for the quantitative determination of Aflatoxin B1 in grains, nuts, spices, cereals and other commodities including animal feed. The test has a low procedure time of 5 minutes, producing highly accurate and precise results.

Elisa kit characteristics:

- Competitive Quantitative ELISA test with single-break strip plate with 48 wells (6 strips) or 96 wells (12 strips)
- 5-min ELISA method
- Limit of detection (LOD): 1.5 ppb
- Wide range of quantification: 2-50 ppb
- High specificity and sensitivity
- All reagents are in ready to use format
- Adjusted to the EU legislation limit
- Shelf Life: 12 months | Storage 2-8 °C

CAT.NUMBER: B5048/B5096

BIO-SHIELD B1 OP

Bio-Shield Aflatoxin B1 Optimum Performance is an ELISA test for the quantitative determination of Aflatoxin B1 in grains, cereals, spices, oil, animal feed and baby food ingredients.

Elisa kit characteristics:

- Competitive Quantitative ELISA test with single-break strip plate with 48 wells (6 strips) or 96 wells (12 strips)
- Limit of detection (LOD): 1 ppb
- Wide range of quantification: 2.5-50 ppb
- High specificity and sensitivity
- All reagents are in ready to use format
- Adjusted to the EU and Asian legislation limit
- Very fast process (20 min)
- Shelf Life: 12 months | Storage 2-8 °C

CAT.NUMBER: B3348/B3396





BIO-SHIELD B1 ES

Bio-Shield Aflatoxin B1 Extra Sensitive is an ELISA test for the quantitative determination of Aflatoxin B1 in grains, nuts, cottonseeds, cereals and other commodities including animal feed.

Elisa kit characteristics:

- Competitive Quantitative ELISA test with single-break strip plate with 48 wells (6 strips) or 96 wells (12 strips)
- Limit of detection (LOD): 0.2 ppb
- Range of quantification: 0.5 -10 ppb
- Ultra sensitive method
- All reagents are in ready to use format
- Adjusted to the EU legislation limit
- Very fast process (20 min)
- Shelf Life: 12 months | Storage 2-8 °C

CAT.NUMBER: B2948/B2996

BIO-SHIELD B1 BF

Bio-Shield Aflatoxin B1 Baby Food is an ELISA test for the quantitative determination of Aflatoxin B1 in grains, nuts and cereals in accordance with the EU and Asian legislation limit of AFB1 in baby foods.

Elisa kit characteristics:

- Competitive Quantitative ELISA test with single-break strip plate with 48 wells (6 strips) or 96 wells (12 strips)
- Limit of detection (LOD): 0.02 ppb
- Range of quantification: 0.06-2.5 ppb
- Ultra sensitive method
- Fast and easy to use extraction protocol
- All reagents are in ready to use format
- Adjusted to the EU and Asia legislation limit for infant food
- Fast process (75 min)
- Shelf Life: 12 months | Storage 2-8 °C

CAT.NUMBER: B3148/B3196

BIO-SHIELD TOTAL 5

Bio-Shield Total 5 is an ELISA test for the quantitative determination of Aflatoxins B1, B2, G1, G2 in grains, nuts, cereals and other commodities including animal feed. The test has a low procedure time of 5 minutes, producing highly accurate and precise results.

Elisa kit characteristics:

- Competitive Quantitative ELISA test with single-break strip plate with 48 wells (6 strips) or 96 wells (12 strips)
- 5-min ELISA method
- Limit of detection (LOD): 1,5 ppb
- Wide range of quantification: 2-50 ppb
- High specificity and sensitivity
- Cross reaction (Aflatoxin B1: 100%, Aflatoxin B2: 80%, Aflatoxin G1: 80%, Aflatoxin G2: 55%)
- All reagents are in ready to use format
- Adjusted to the US and Asian legislation limit
- Shelf Life: 12 months | Storage 2-8 °C

CAT.NUMBER: B5148/B5196

BIO-SHIELD TOTAL ES

Bio-Shield Aflatoxin Total Extra Sensitive is an ELISA test for the quantitative determination of Aflatoxins B1, B2, G1, G2 in grains, nuts, cottonseeds, cereals and other commodities including animal feed.

Elisa kit characteristics:

- Competitive Quantitative ELISA test with single-break strip plate with 48 wells (6 strips) or 96 wells (12 strips)
- Limit of detection (LOD): 0.2 ppb
- Wide range of quantification: 0.6-10 ppb
- Ultra sensitive method
- Cross reaction (Aflatoxin B1 100%, Aflatoxin B2 98%, Aflatoxin G1 97%, Aflatoxin G2 86%)
- All reagents are in ready to use format
- Adjusted to the EU legislation limit
- Very fast process (20 min)
- Shelf Life: 12 months | Storage 2-8 °C

CAT.NUMBER: B2348/B2396

BIO-SHIELD TOTAL OP

Bio-Shield Aflatoxin Total Optimum Performance is an ELISA test for the quantitative determination of Aflatoxins B1, B2, G1, G2 in grains, cereals, spices, oil and animal feed.

Elisa kit characteristics:

- Competitive Quantitative ELISA test with single-break strip plate with 48 wells (6 strips) or 96 wells (12 strips)
- Limit of detection (LOD): 1 ppb
- Range of quantification: 3-50 ppb
- Ultra High specificity and sensitivity
- Cross reaction (Aflatoxin B1 100%, Aflatoxin B2 98%, Aflatoxin G1 97%, Aflatoxin G2 86%)
- All reagents are in ready to use format
- Adjusted to the EU and Asian legislation limit
- Very fast process (20 min)
- Shelf Life: 12 months | Storage 2-8 °C

CAT.NUMBER: B3948/B3996

BIO-SHIELD ZON 5

Bio-Shield ZON 5 is an ELISA test for the quantitative determination of Zearalenone (ZON) in grains, cereals and other commodities including animal feed. The test has a low procedure time of 5 minutes, producing highly accurate and precise results.

Elisa kit characteristics:

- Competitive Quantitative ELISA test with single-break strip plate with 48 wells (6 strips) or 96 wells (12 strips)
- 5-min method
- Limit of detection (LOD): 20 ppb
- Wide range of quantification 25-500 ppb
- High specificity and sensitivity
- All reagents are in ready to use format
- Shelf Life: 12 months | Storage 2-8 °C

CAT.NUMBER: B5348/B5396



BIO-SHIELD DON 5

Bio-Shield DON 5 is an ELISA test for the quantitative determination of Deoxynivalenol (DON) in grains, cereals and other commodities including animal feed. The test has a low procedure time of 5 minutes, producing highly accurate and precise results.

Elisa kit characteristics:

- Competitive Quantitative ELISA test with single-break strip plate with 48 wells (6 strips) or 96 wells (12 strips)
- 5-min ELISA method
- Limit of detection (LOD): 0.07 ppm
- Wide range of quantification: 0.1-5 ppm
- High specificity and sensitivity
- All reagents are in ready to use format
- Shelf Life: 12 months | Storage 2-8 °C

CAT.NUMBER: B5248/B5296

BIO-SHIELD DON

Bio-Shield Deoxynivalenol (DON) is an ELISA test for the quantitative determination of Deoxynivalenol in grains, nuts, cereals and other commodities including animal feed.

Elisa kit characteristics:

- Competitive Quantitative ELISA test with single-break strip plate with 48 wells (6 strips) or 96 wells (12 strips)
- Limit of detection (LOD): 0.05 ppm
- Wide range of quantification: 0.1-5 ppm
- High specificity and sensitivity
- All reagents are in ready to use format
- Very fast process (20 min)
- Shelf Life: 12 months | Storage 2-8 °C

CAT.NUMBER: B2648/B2696



BIO-SHIELD OCHRATOXIN

Bio-Shield Ochratoxin is an ELISA test for the quantitative determination of Ochratoxin A in grains, nuts, cottonseeds, cereals and other commodities including animal feed.

Elisa kit characteristics:

- Competitive Quantitative ELISA test with single-break strip plate with 48 wells (6 strips) or 96 wells (12 strips)
- Limit of detection (LOD): 0.5 ppb
- Wide range of quantification: 1.5-40 ppb
- High specificity and sensitivity
- All reagents are in ready to use format
- Very fast process (20 min)
- Shelf Life: 12 months | Storage 2-8 °C

CAT.NUMBER: B2448/B2496

BIO-SHIELD T2/HT-2

Bio-Shield T-2/HT-2 is an ELISA test for the quantitative determination of Trichothecene T-2/HT-2 in grains, cereals and animal feed.

Elisa kit characteristics:

- Competitive Quantitative ELISA test with single-break strip plate with 48 wells (6 strips) or 96 wells (12 strips)
- Limit of detection (LOD): 5 ppb
- Wide range of quantification: 10-500 ppb
- High specificity and sensitivity
- All reagents are in ready to use format
- Very fast process (15 min)
- Shelf Life: 12 months | Storage 2-8 °C

CAT.NUMBER: B3248/B3296

BIO-SHIELD FUMONISIN 5

Bio-Shield Fumonisin 5 is an ELISA test for the quantitative determination of Fumonisin (Fumo) in grains, cereals and other commodities including animal feed. The test has a low procedure time of 5 minutes, producing highly accurate and precise results.

Elisa kit characteristics:

- Competitive Quantitative ELISA test with single-break strip plate with 48 wells (6 strips) or 96 wells (12 strips)
- 5-min ELISA method
- Limit of detection (LOD): 0.15 ppm
- Wide range of quantification: 0.2-6 ppm
- High specificity and sensitivity
- All reagents are in ready to use format
- Shelf Life: 12 months | Storage 2-8 °C

CAT.NUMBER: B5548/B5596

BIO-SHIELD T-2

Bio-Shield T-2, is an ELISA test for the determination of the Trichothecene T-2 in grains, cereals and other commodities including animal feed. In contrast with other products, this ELISA test can detect solely the T-2 mycotoxin.

Elisa kit characteristics:

- Competitive Quantitative ELISA test with single-break strip plate with 48 wells (6 strips) or 96 wells (12 strips)
- Limit of detection (LOD): 3.3 ppb
- Wide range of quantification: 6-500 ppb
- High specificity and sensitivity
- All reagents are in ready to use format
- Very fast process (20 min)
- Shelf Life: 12 months | Storage 2-8 °C

CAT.NUMBER: B4148/B4196



STANDARD MYCOTOXINS

AN ACCURATE AND COST-EFFECTIVE ELISA METHOD

1-Standard ELISA series is a new innovative ELISA system, using a precalibrated curve for the quantification of mycotoxins in only 5 minutes.

Unlike the regular ELISA protocol that needs to have several standards for an accurate quantification method, the 1-standard ELISA requires only the first (analyte free) standard.

The main advantage of the regular ELISA is that small or sometimes bigger variations of the individual experiment (time delays or temperature variations) are the same both for the standards as well as for the samples, minimizing their impact on the results. For this reason, the 1-standard ELISA series still uses the analyte free standard in order to provide the same advantage in terms of accuracy.

The precalibrated standard curve has been run multiple times in ProGnosis Biotech facilities and following thorough examinations and validations it is unique for every lot and it can be downloaded on Prognosis Data reader.

When a user wants to analyze one sample, with the 1-Standard ELISA only two ELISA wells are needed, instead of 6 (or even more) with the regular ELISA.

1-STANDARD B1

1-Standard B1 is an ELISA test for the quantitative determination of Aflatoxin B1 in grains, nuts, spices, cereals and animal feed. The test provides a cost-effective, and reliable solution to the analyst, including only the standard 1 (zero standard) in the kit.

Elisa kit characteristics:

- Competitive Quantitative ELISA test with single-break strip plate with 48 wells (6 strips)
- Only one standard needed
- 5-min ELISA method
- Limit of detection (LOD): 1.5 ppb
- Wide range of quantification: 2-50 ppb
- High specificity and sensitivity
- All reagents are in ready to use format
- Adjusted to the EU legislation limit
- Shelf Life: 12 months | Storage 2-8 °C

CAT.NUMBER: D4948

1-STANDARD TOTAL

1-Standard Total is an ELISA test for the quantitative determination of Aflatoxins B1, B2, G1, G2 in grains, nuts, spices, cereals and animal feed. The test provides a cost-effective, and reliable solution to the analyst, including only the standard 1 (zero standard) in the kit.

Elisa kit characteristics:

- Competitive Quantitative ELISA test with single-break strip plate with 48 wells (6 strips)
- Only one standard needed
- 5-min ELISA method
- Limit of detection (LOD): 1.5 ppb
- Wide range of quantification: 2-50 ppb
- High specificity and sensitivity
- All reagents are in ready to use format
- Adjusted to the US and Asian legislation limit
- Shelf Life: 12 months | Storage 2-8 °C

CAT.NUMBER: D4348





1-STANDARD DON

1-Standard DON is an ELISA test for the quantitative determination of Deoxynivalenol (DON) in grains, cereals and animal feed. The test provides a cost-effective, and reliable solution to the analyst, including only the standard 1 (zero standard) in the kit.

Elisa kit characteristics:

- Competitive Quantitative ELISA test with single-break strip plate with 48 wells (6 strips)
- Only one standard needed
- 5-mins ELISA method
- Limit of detection (LOD): 0.03 ppm
- Wide range of quantification: 0.05-5 ppm
- High specificity and sensitivity
- All reagents are in ready to use format
- Shelf Life: 12 months | Storage 2-8 °C

CAT.NUMBER: D4548

1-STANDARD ZON

1-Standard Zon is an ELISA test for the quantitative determination of Zearalenone (ZON) in grains, spices, cereals and animal feed. The test provides a cost-effective, and reliable solution to the analyst, including only the standard 1 (zero standard) in the kit.

Elisa kit characteristics:

- Competitive Quantitative ELISA test with single-break strip plate with 48 wells (6 strips)
- Only one standard needed
- 5-min ELISA method
- Limit of detection (LOD): 15 ppb
- Wide range of quantification: 20-500
- High specificity and sensitivity
- All reagents are in ready to use format
- Shelf Life: 12 months | Storage 2-8 °C

CAT.NUMBER: D4448

1-STANDARD FUMONISIN

1-Standard Fumonisin is an ELISA test for the quantitative determination of Fumonisin (FUMO) in grains, spices, cereals and animal feed. The test provides a cost-effective, and reliable solution to the analyst, including only the standard 1 (zero standard) in the kit.

Elisa kit characteristics:

- Competitive Quantitative ELISA test with single-break strip plate with 48 wells (6 strips)
- Only one standard needed
- 5-min ELISA method
- Limit of detection (LOD): 0.11 ppm of Fumonisin
- Wide range of quantification: 0.16-6 ppm of Fumonisin
- High specificity and sensitivity
- All reagents are in ready to use format
- Shelf Life: 12 months | Storage 2-8 °C

CAT.NUMBER: D4748





ELISA

MILK ADULTERATION



Higher priced milk with limited seasonal availability is commonly and fraudulently adulterated with lower milk price from different dairy animals like cow. Adulterated milk either used in direct human consumption or in cheese manufacture (like feta, which is recognized as Protected Designation of Origin, PDO) results in a final product inferior to that expected by the consumer. Due to unknown milk mixtures, significant changes may occur in the final sensory characteristics and quality.

In addition, Cow's milk allergy (CMA) is one of the most common food allergies, while Goat's milk is also associated with a rare allergy disorder. Therefore, cow or goat milk must be declared as ingredients on food labels.

Milk adulteration can be detected by toilsome methods such as chromatography and electrophoresis requiring though highly sophisticated and expensive equipment and consequently are considered of limited value for the usual screening of milk.

BIO-SHIELD COW

Bio-Shield Cow is an ELISA test for the quantitative determination of Cow's milk in Sheep's or Goat's milk.

Elisa Kit characteristics:

- Sandwich Quantitative ELISA test with single-break strip plate with 48 wells (6 strips) or 96 wells (12 strips)
- Limit of detection (LOD): 0.10% cow's milk in sheep's milk or goat's milk
- High specificity and sensitivity
- Up to 8% adulterations no need for extra dilutions
- Low procedure time (85 min)
- All reagents are in ready to use format
- Shelf Life: 12 months
- Storage 2-8 °C

CAT.NUMBER: B1248/B1296

BIO-SHIELD GOAT

Bio-Shield Goat is an easy to use, innovating and patented ELISA test for the determination of Goat's milk in Sheep's milk.

Elisa Kit characteristics:

- Sandwich Quantitative ELISA test with single-break strip plate with 48 wells (6 strips) or 96 wells (12 strips)
- Limit of detection (LOD): 0.14 % goat's milk in sheep's milk
- Up to 25% adulterations no need for extra dilutions
- Low procedure time (85 min)
- All reagents are in ready to use format
- Shelf Life: 12 months
- Storage 2-8 °C

CAT.NUMBER: B1148/B1196



**ALTERNATIVE PRODUCTS
FOR SCREENING
MILK ADULTERATION:
BIO-SHIELD COW FAST,
BIO-SHIELD GOAT FAST**

VISIT

WWW.PROGOSIS-BIOTECH.COM

BIO-SHIELD COW CHEESE

The only ELISA product in the market, specially designed to detect the composition of cow milk in mature cheese.

Elisa kit characteristics:

- Sandwich Quantitative ELISA test with single-break strip plate with 48 wells (6 strips)
- Limit of detection (LOD): 0,04 % constitution of Cow milk in Cheese
- High specificity and sensitivity
- Adjusted to the Protected Designation of Origin (PDO) composition
- Range of quantification 4 %, no need for extra dilutions
- Low procedure time (85 min)
- All reagents are in ready to use format
- Shelf Life: 12 months
- Storage 2-8 °C

CAT.NUMBER: B1748

HISTAMINE

ELISA | LATERAL FLOW



Histamine (HA) is best known as a mediator of allergic reactions, but it is now recognized to participate in numerous other normal and pathologic processes.

HA is a heterocyclic primary amine and is the by-product of the decarboxylation of the amino acid L-histidine by the enzyme histidine decarboxylase. The latter is produced by certain bacteria that can be found in seafood. The most common fish species that tend to accommodate HA belong to the scombroid family of fish (tuna, mahi mahi, marlin, bluefish, sardines, anchovy, bonito, herring and mackerel). After the fish are harvested the bacterial growth results in increasing histidine decarboxylase amounts which in turn induces HA production. High levels of HA may cause scombroid poisoning in humans which consists of various symptoms, such as rash, nausea, vomiting, diarrhea, hypotension, heart palpitations and muscle weakness. Most controlling government agencies worldwide have regulations regarding the amount of HA allowable in fish and fish products. HA levels in fish of good quality are usually below 10 ppm. HA values between 50 and 200 ppm are acceptable depending on the fish species and the country.

The accurate and rapid determination of Histamine presence in fish and seafood products is quite important.

BIO-SHIELD HISTAMINE

Bio-Shield Histamine is an ELISA test for the quantitative determination of Histamine in fresh fish, canned fish, frozen fish and fish meal. The method does not require an acylation process while it provides a wide range of quantification.

Elisa kit characteristics:

- Competitive Quantitative ELISA test with single-break strip plate with 48 wells (6 strips) or 96 wells (12 strips)
- Limit of detection (LOD): 2 ppm
- Wide range of quantification: 2.5-200 ppm
- Low Procedure time: 20 mins
- No acylation process needed
- High specificity and sensitivity
- All reagents are in ready to use format
- Adjusted to the global legislation limits for Histamine
- Shelf Life: 12 months | Storage 2-8 °C

CAT.NUMBER: B6048/B6096

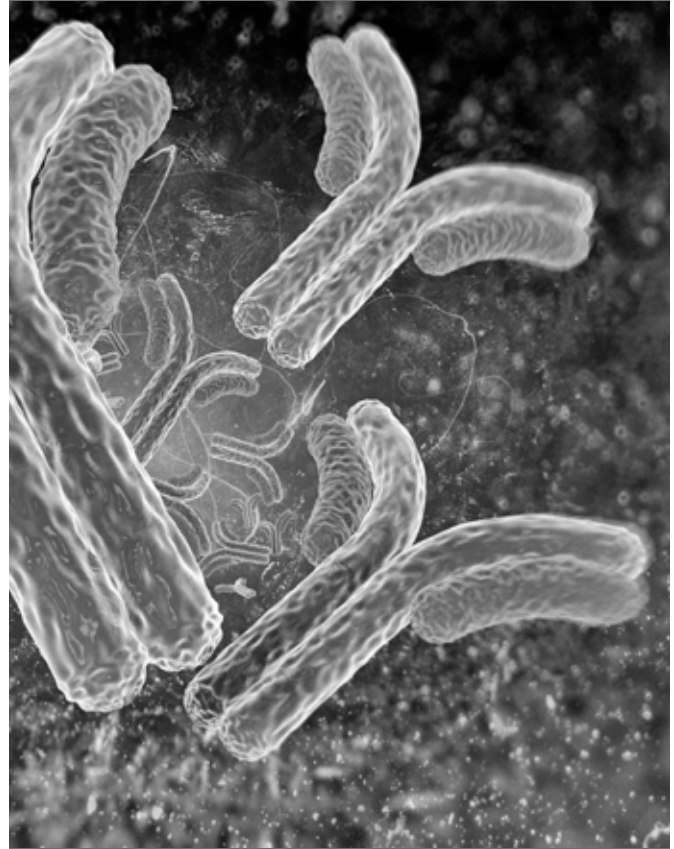
SYMMETRIC HISTAMINE

Symmetric Histamine is an innovative Lateral Flow test for the quantitative determination of Histamine in fresh fish, canned fish, frozen fish and fish meal. The method is the only fully quantitative rapid test for Histamine in the market.

Elisa kit characteristics:

- Lateral flow in dip stick format available in 24 and 48 test sticks
- Limit of detection (LOD): 5.3 ppm
- Range of quantification: 8-300 ppm
- Optional visual detection limit at 50 ppm
- Low procedure time (3 min)
- No acylation process needed
- Extremely high accuracy of the results
- Adjusted to the global legislation limits for Histamine
- Shelf Life: 12 months | Storage 2-8 °C

CAT.NUMBER: S9024/S9048





SERVICES



CONTRACT MANUFACTURE

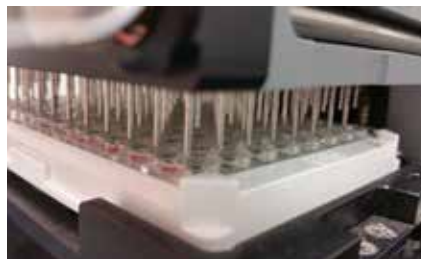
Elisa, Western blot and Lateral flow technology based products can be outsourced to ProGnosis Biotech.

CONTRACT ASSAY DEVELOPMENT

ProGnosis Biotech assists clients in developing, manufacturing and commercializing point of care with Elisa Western Blot, Lateral Flow Assays.

EDUCATIONAL PROGRAMS

We train lab scientists so that our customers can achieve the demanding criteria of a quality control-lab. The training programs are custom designed on customer needs.



PROGNOSIS DATA READER

We offer a free of charge, stand alone, easy to use, statistics analysis program, the 'Prognosis data reader' specially designed for our products. The user has the ability to write directly to the program or to import values from Microsoft Excel or Open Office from the spectrophotometer and create a full analytic report of the ELISA results without any additional efforts from the users.



S-FLOW

S-Flow is a flexible software platform for the rapid quantitative or semi-quantitative interpretation of the result of one or more lateral flow test strips. The device running S-Flow can be connected to a flatbed scanner or to S-Flow reader a more sophisticated imaging device for the acquisition of the lateral flow strip image. After the image is transferred to the memory, advanced algorithms are applied to detect, enumerate and align the strips and extract the color information on each one of them. This color information is then analyzed to produce the test results according to a specific method. This method that can be a standard statistical model or any method developed in collaboration with Lateral Logic Ltd and with the manufacturer of the test.



ACCURACY THROUGH INNOVATION

OUR NEW PRODUCT!

SYMMETRIC OCHRATOXIN WINE

A lateral flow test for the quantitative determination of Ochratoxin in wine, in just 5 min.

- Limit of Detection: 0.2 ppb
- Range of Quantification: 0.35 – 5 ppb

Suitable for all types of wine!

CAT.NUMBER: S6224/S6248



www.prognosis-biotech.com | e: info@prognosis-biotech.com
t: +30 2410 623922 | f: +30 700 700 6262
Farsalon 153 | 41335 Larissa, Greece